

Gro Tec E

20 oz canister label

9-7/8" x 11"

May 21, 2012

Magenta

Yellow

Black

APPROVED

By Lisa Adamson at 3:36 pm, Oct 04, 2013

ELIMINATOR® Ant, Flea & Tick Killer PLUS Granules**PRECAUTIONARY STATEMENTS**
Hazards to Humans and Domestic Animals**CAUTION**

Harmful if swallowed. Causes moderate eye irritation. Avoid contact with eyes or clothing. Wash thoroughly with soap and water after handling and before eating, drinking, chewing gum, using tobacco or using the toilet.

FIRST AID**IF SWALLOWED:**

- Call a poison control center or doctor immediately for treatment advice.
- Have person sip a glass of water if able to swallow.
- Do not induce vomiting unless told to do so by the poison control center or doctor.
- Do not give anything by mouth to an unconscious person.

IF IN EYES

- Hold eye open and rinse slowly and gently with water for 15-20 minutes.
- Remove contact lenses, if present, after the first 5 minutes, then continue rinsing eye.
- Call a poison control center or doctor for treatment advice.

NOTE TO PHYSICIAN

This product is a pyrethroid. If large amounts have been ingested, milk, cream and other digestible fats and oils may increase absorption and so should be avoided.

ENVIRONMENTAL HAZARDS

This pesticide is extremely toxic to fish and aquatic invertebrates. To protect the environment, do not allow pesticide to enter or run off into storm drains, drainage ditches, gutters or surface waters. Applying this product in calm weather when rain is not predicted for the next 24 hours will help to ensure that wind or rain does not blow or wash pesticide off the treatment area. Sweeping any product that lands on a driveway, sidewalk, or street, back onto the treated area of the lawn or garden will help to prevent run off to water bodies or drainage systems.

DIRECTIONS FOR USE

It is a violation of Federal Law to use this product in a manner inconsistent with its labeling.

In New York, this product may NOT be applied to any grass or turf area (lawns) within 100 feet of a water body (lake, pond, river, stream, wetland, or drainage ditch).

In New York State, do make a single repeat application of Bifenthrin 0.1% Lawn Granules if there are signs of renewed insect activity, but not sooner than two weeks after the first application.

Do not allow children or pets to enter the area until dry.

Application is prohibited directly into sewers or drains, or to any area like a gutter where drainage to sewers, storm drains, water bodies, or aquatic habitat can occur. Do not allow the product to enter any drain during or after application.

Apply this product directly to the lawn or garden area. Water treated area as directed on this label. Do not water to the point of run-off.

Do not make applications during the rain.

LAWN, HOME PERIMETER, ORNAMENTAL & FLOWER GARDENS Surface-Feeding Insects

Use this product for the control of ants, including Carpenter, Red Harvester, Odorous Pyramid, Pharaoh (Sugar), Foraging Fire Ants, Armyworms (including Fall Armyworms), Billbug (including Bluegrass Billbug), Chiggers, Chinch Bugs, Cockroaches, Crickets, Cutworms (including Black Cutworms), Earwigs, Grasshoppers, Mealybugs, Pillbugs, Silverfish, Sod Webworms (Lawn Moth), Sowbugs, and Weevils (including Hyperodes and Bluegrass).

Application Instructions: Apply this product evenly at the rate of 1.2 to 2.4 pounds per 1,000 sq. ft. by using any hand held or power operated gravity or rotary type spreader designed for the application of granular materials. A 12-pound bag will treat a 5,000 to 10,000 square feet area.

Ant, Flea & Tick Killer PLUS Granules should be applied when insects first appear. If suitable signs of renewed insect activity become apparent and re-treatment becomes necessary, applications must be limited to no more than one application per a seven day period and at the instructed rate to obtain best results. Best results will be obtained by

thoroughly watering the treated area immediately after application.

Argentine Ants, Black Turf Ants, Black Turfgrass Ataenius, Fleas (including Cat Fleas), Leafhoppers, Spiders (including Brown Recluse Spiders) and Ticks (including Brown Dog Ticks)

Evenly apply 4 ounces over a 100 sq. ft. area. Irrigate or water thoroughly immediately after application.

Centipedes, Millipedes, Pavement Ants

Uniformly apply 4 to 8 ounces over a 100 sq. ft. area. Irrigate or water thoroughly immediately after application.

Mole Crickets (including Tawny Mole Crickets)

Uniformly apply 8 ounces over a 100 sq. ft. area. Treat Mole Crickets in late spring. Irrigate or water thoroughly immediately after application.

For Fire Ant Mounds

Uniformly apply 1 tablespoon or 3 tablespoons** of this product to the surface of each mound. Apply in cool weather, 65° to 80° F, or in early morning or late evening hours. Avoid disturbing ants. Treat new mounds as they appear. Irrigate or water thoroughly immediately after application. ** Food utensils such as tablespoons/teaspoons must not be used for food purposes after use in measuring pesticides.

Ornamental Flower Beds (Outdoors) Pests Controlled:

Ants, crickets, earwigs, grasshoppers, spiders and ticks. **How to Apply:** Evenly apply 2 ounces of product for every 50 sq. ft. area. Repeat application as necessary only if there are signs of renewed insect activity. Repeat application must be limited to no more than once per seven days.

Home Invading Insects: Barrier Treatment Around House Foundation Pests Controlled:

Ants, chiggers, crickets, earwigs, grasshoppers, spiders and ticks. **How to Apply:** Evenly apply a 2-foot band of granules next to the house foundation. Use 2 ounces for each 50 sq. ft. (2 ft. X 25 ft.). Repeat applications every 2 weeks only if there are signs of renewed insect activity.

STORAGE AND DISPOSAL

Do not contaminate water, food or feed by storage or disposal. **PESTICIDE STORAGE:** Keep out of reach of children and animals. Store in original containers only. Store in a cool, dry place and avoid excess heat. Carefully open containers. After partial use close tightly. **CONTAINER DISPOSAL: If empty:** Non-refillable container. Do not reuse or refill this container. Empty container through use according to label instructions. Place in trash or offer for recycling if available. **If partly filled:** Call your local solid waste agency for disposal instructions. Never place unused product down any indoor (including toilet) or outdoor (including sewer) drain.

NOTICE: Buyer assumes all risks of use, storage or handling of this product not in accordance with directions.

WARRANTY DISCLAIMER AND LIMITATION OF LIABILITY

The directions for use of this product must be followed carefully. TO THE EXTENT CONSISTENT WITH APPLICABLE LAW, (1) THE GOODS DELIVERED TO YOU ARE FURNISHED "AS IS" BY MANUFACTURER OR SELLER AND (2) MANUFACTURER AND SELLER MAKE NO WARRANTIES, GUARANTEES, OR REPRESENTATIONS OF ANY KIND TO BUYER OR USER, EITHER EXPRESS OR IMPLIED, OR BY USAGE OF TRADE, STATUTORY OR OTHERWISE, WITH REGARD TO THE PRODUCT SOLD, INCLUDING, BUT NOT LIMITED TO MERCHANTABILITY, FITNESS FOR A PARTICULAR PURPOSE, USE, OR ELIGIBILITY OF THE PRODUCT FOR ANY PARTICULAR TRADE USAGE. BUYER'S OR USER'S EXCLUSIVE REMEDY, AND MANUFACTURER'S OR SELLER'S TOTAL LIABILITY SHALL BE FOR DAMAGES NOT EXCEEDING THE COST OF THE PRODUCT.

If you do not agree with or do not accept any of directions for use, the warranty disclaimers, or limitations on liability, do not use the product, and return it unopened to the Seller, and the purchase price will be refunded.

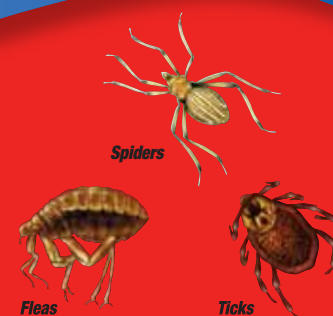
☎ For More Information Call 888-648-9855

Eliminator® is a registered trademark of Gro Tec, Inc.

Distributed by Gro Tec, Inc.
P.O. Box 290 Madison GA 30650

EPA Reg. No. 53883-121-59144
EPA Est. No. 59144-GA-1A, 67572-GA-1B, 44616-MO-1C
Subscript used is first letter of run code on container

www.eliminator.com

ELIMINATOR®**20 OZ
SIZE****Ant, Flea
& Tick
Killer PLUS
Granules****FAST ACTING
AND
ODOR FREE****Kills Ants & Spiders**

ACTIVE INGREDIENT:
Bifenthrin* 0.1%
OTHER INGREDIENTS: 99.9%
TOTAL: 100.0%
*Cis isomers 97% minimum, trans isomers 3% maximum.

**KEEP OUT OF REACH OF CHILDREN
CAUTION**

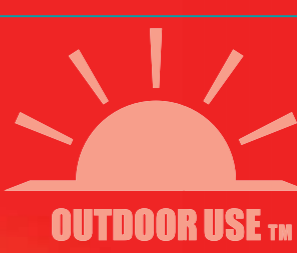
See Side Panel for First Aid and Additional Precautions.

**For Chemical Spill, Leak, Fire, or exposure,
Call CHEMTREC (800) 424-9300
For Medical Emergencies Only,
Call (877) 325-1840
For Product Inquiry, Call 888-648-9855**

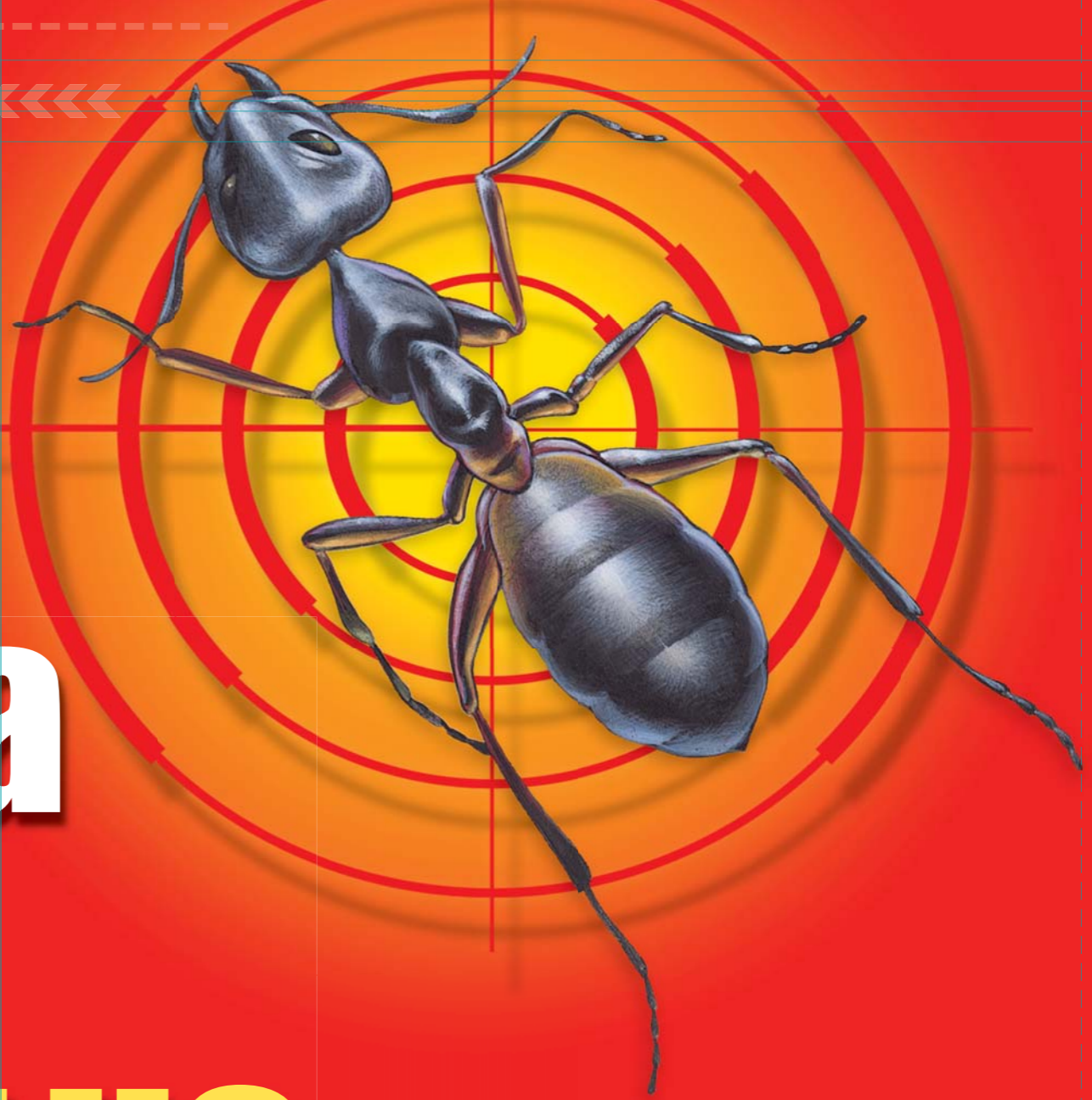
NET CONTENTS 20 OZ (567 grams)

11"

9-7/8"



RESEALABLE BAG TO OPEN CUT ALONG DOTTED LINE

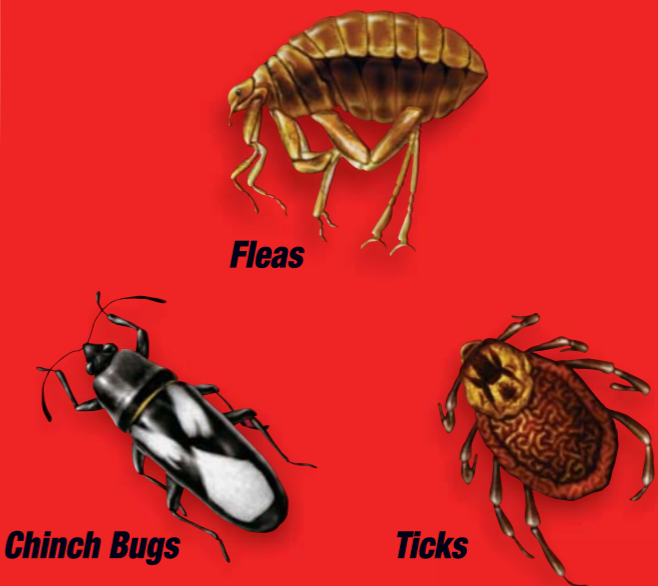


FAST ACTING AND ODOR FREE

ELIMINATOR

Ant, Flea & Tick Killer PLUS Granules

- Kills Listed Insects in Lawns & Landscapes
Keeps insects away for up to 2 months



ACTIVE INGREDIENT: By WT. Bifenthrin 0.1% OTHER INGREDIENTS 99.9% TOTAL 100.0%
KEEP OUT OF REACH OF CHILDREN CAUTION NET WEIGHT 10 LBS (4.54 kg)

READY TO USE Treats up to 8,000 sq. ft.

- Kills 50+ listed insects including chinch bugs, mole crickets and grubs
For Use on Lawns, Home Perimeter, Ornamental & Flower Gardens

ELIMINATOR Ant, Flea & Tick Killer PLUS Granules

Directions for Use: This is a violation of Federal law to use this product in a manner inconsistent with the labeling... PRECAUTIONARY STATEMENTS: Harmful if swallowed...

Table with 2 columns: Application Instructions and Target Pests. Includes categories like Lawn Home Perimeter, Ornamental Flower Beds, and Home Inhabiting Insects.

Table with 2 columns: Application Instructions and Target Pests. Includes categories like Home Vegetable Gardens and Sweet Corn.

For Chemical Spill, Leak, Fire, or Exposure, Call CHEMTREC (800) 424-9300. For Medical Emergencies Only, Call (877) 325-1840.

Table with 2 columns: Application Instructions and Target Pests. Includes categories like Home Vegetable Gardens and Sweet Corn.

Table with 2 columns: Application Instructions and Target Pests. Includes categories like Home Vegetable Gardens and Sweet Corn.

ELIMINATOR Ant, Flea & Tick Killer PLUS Granules

SGS JOB #: 387887_PFB File: Eliminator Ant Killer for Control Solutions 100b

BLACK 1002 BLACK 1003 CYAN 1005 RED 1008 MAGENTA 1009 WASH RED 1010 YELLOW PMS 109 YELLOW 1013 WHITE FLOODCOAT 1001

APPROVED By Lisa Adamson at 12:54 pm, Aug 05, 2013



RESEALABLE BAG TO OPEN CUT ALONG DOTTED LINE



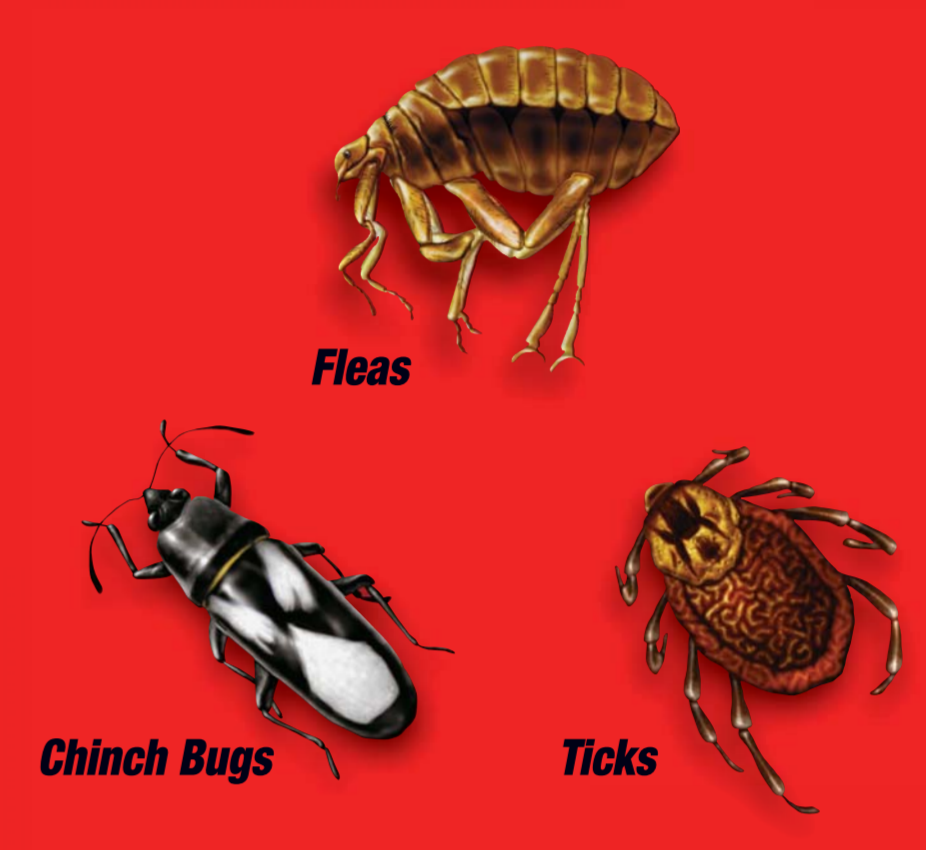
ELIMINATOR

Ant, Flea & Tick Killer PLUS Granules



FAST ACTING AND ODOR FREE

Kills Listed Insects in Lawns & Landscapes Keeps insects away for up to 2 months



READY TO USE Treats up to 16,000 sq. ft.

- Kills 50+ listed insects including chinch bugs, mole crickets and grubs
For Use on Lawns, Home Perimeter, Ornamental & Flower Gardens

Table with Active Ingredient (Bifenthrin 0.1%), Other Ingredients (99.9%), and Total (100.0%)

KEEP OUT OF REACH OF CHILDREN CAUTION NET WEIGHT 20 LBS (9.08 kg)

ELIMINATOR Ant, Flea & Tick Killer PLUS Granules

For More Information Call 888-648-9855 www.eliminator-info.com

For Chemical Spill, Leak, Fire, or Exposure, Call CHEMTREC (800) 424-9300

Table with columns: Pests, Storage and Disposal, and Application instructions for various pests like Fleas, Chinch Bugs, etc.

Table with columns: Directions, Spreader Settings, and Spreader for Garden Spreader Tips

ELIMINATOR Ant, Flea & Tick Killer PLUS Granules

Directions for Use: This is a violation of Federal law to use this product in a manner inconsistent with its labeling. It is extremely toxic to humans and domestic animals...

Table with columns: First Aid, IF SWALLOWED, IF IN EYES, and Note to Physician

CAUTION: HAZARDOUS TO HUMANS AND DOMESTIC ANIMALS

SGS logo and contact information for SSS Chemical, including address and phone number.

Color calibration chart with various color patches and a Quality Control section with checkboxes for 'Process only' and 'Exact match'.

Vertical text on the left edge: 2.6875", 2.9375", 2.6875"

Vertical text on the right edge: 2.6875", 2.9375", 2.6875"

ELIMINATOR® Ant, Flea & Tick Killer PLUS Granules

PRECAUTIONARY STATEMENTS
HAZARDS TO HUMAN AND DOMESTIC ANIMALS
CAUTION: Harmful if swallowed. Causes moderate eye irritation. Avoid contact with eyes or clothing. Wash thoroughly with soap and water after handling and before eating, drinking, chewing gum or using tobacco or using the toilet.

FIRST AID
IF SWALLOWED:

- Call a poison control center or doctor immediately for treatment advice.
- Have person sip a glass of water if able to swallow.
- Do not induce vomiting unless told to do so by the poison control center or doctor.
- Do not give anything by mouth to an unconscious person.

IF IN EYES:

- Hold eye open and rinse slowly and gently with water for 15 to 20 minutes.
- Remove contact lenses, if present, after the first 5 minutes, then continue rinsing eye.
- Call a poison control center or doctor for treatment advice.

NOTE TO PHYSICIAN
 This product is a pyrethroid. If large amounts have been ingested, milk, cream or other digestive fats and oils may increase absorption and so should be avoided.

ENVIRONMENTAL HAZARDS
 This pesticide is extremely toxic to fish and aquatic invertebrates. To protect the environment, do not allow pesticide to enter or run off into storm drains, drainage ditches, gutters or surface waters. Applying this product in calm weather when rain is not predicted for the next 24 hours will help to ensure that wind or rain does not blow or wash pesticide off the treatment area. Sweeping any product that lands on a driveway, sidewalk, or street, back onto the treated area of the lawn or garden will help to prevent run off to water bodies or drainage systems.

DIRECTIONS FOR USE
 It is a violation of Federal law to use this product in a manner inconsistent with its labeling.
 In New York State, this product may NOT be applied to any grass or turf area (lawns) within 100 feet of a water body (lake, pond, river, stream, wetland, or drainage ditch).
 In New York State, do make a single repeat application of this product if there are signs of renewed insect activity, but not sooner than two weeks after the first application.
 Do not allow children or pets to enter the area until dry.
 Application is prohibited directly into sewers or drains, or to any area like a gutter where drainage to sewers, storm drains, water bodies, or aquatic habitat can occur. Do not allow this product to enter any drain during or after application.
 Apply this product directly to the lawn or garden area. Water treated area as directed on this label. Do not water to the point of run-off. Do not make applications during rain.

LAWN, HOME PERIMETER, ORNAMENTAL & FLOWER GARDENS
Surface-Feeding Insects
 Use this product for the control of ants, including Carpenter, Red Harvester, Odorous Pyramid, Pharaoh (Sugar), Foregoing Fire Ants, Armyworms (including Fall Armyworms), Billbug (including Bluegrass Billbug), Chiggers, Chinch Bugs, Crickets, Cutworms (including Black Cutworms), Earwigs, Grasshoppers, Mealybugs, Sod Webworms (Lawn Moth), and Weevils (including Hyperodes and Bluegrass). Uniformly apply 1.2 to 2.4 pounds over a 1,000 square feet area by using any hand- or power-operated gravity or rotary type spreader designed for the application of granular materials. This 28 lb bag treats up to 22,000 sq. ft. Treat when insects first appear and retreat as necessary. Repeat application is necessary only if there are signs of renewed insect activity. Repeat application should be limited to no more than once per seven days.
Argentine Ants, Black Turt Ants, Black Turfgrass Ateenius, Fleas (including Cat Fleas), Leafhoppers, Spiders (including Brown Recluse Spiders) and Ticks (including Brown Dog Ticks)
 Evenly apply 2.4 pounds over a 1,000 sq. ft. area. Water thoroughly immediately after application.
Centipedes, Millipedes, Pavement Ants
 Uniformly apply 4.8 pounds over a 1,000 sq. ft. area. Water thoroughly immediately after application.
Mole Crickets (including Tawny Mole Crickets)
 Uniformly apply 2.4 to 4.8 pounds over a 1,000 sq. ft. area. Treat in late spring, and water the treated area immediately after application.
For Fire Ant Mounds
 To control Fire Ants, uniformly apply 1 tablespoon or 3 teaspoons* of this product to the surface of each mound.
 1) apply in cool weather, 65 to 80° F, or in early morning or late evening hours. 2) avoid disturbing ants, 3) treat new mounds as they appear and 4) thoroughly water the treated area immediately after application.
 *Food utensils such as tablespoons/spoons must not be used for food purposes after use in measuring pesticides.
Ornamental Flower Beets (Outdoors)
Pests Controlled: Ants, crickets, earwigs, grasshoppers, spiders and ticks.
Application Instructions: Evenly apply 1/2 lb. of product for every 500 sq. ft. area. Repeat application as necessary only if there are signs of renewed insect activity. Repeat application should be limited to no more than once per seven days.
Home Invading Insects: Barrier Treatment Around House Foundation
Pests Controlled: Ants, chiggers, crickets, earwigs, grasshoppers, spiders and ticks.
Application Instructions: Apply a 2-foot band of granules next to the house foundation. Use 1/2 lb. for each 500 sq. ft. (2 ft. x 250 ft.). Repeat applications every 2 weeks only if there are signs of renewed insect activity.

SPREADER TIPS

| Spreader | Spreader Settings | Directions |
|---------------------------------|---|---|
| | Pounds of Product per 500/1,000 sq. ft. 0.5/1.2 1.2/2.4 2.4/4.8 | |
| Scotts AccuGreen® Drop Spreader | 3-1/4 4-1/2 6 | Mow lawn first if grass is tall enough to touch the bottom of the spreader. First apply two header strips. Operate spreader the longest way of the lawn. Overlap wheel to ensure uniform feeding. Shut off spreader when you have reached the header strips or stopped. |
| Scotts SpeedyGreen® Rotary | 2 2-3/4 4-1/2 | Shut off spreader anytime you stop. For complete coverage make each pass about five feet from the previous one, so some overlapping occurs. Avoid applying this product on flower, vegetable and shrub plantings. |

Home Vegetable Gardens
Application Instructions: Make a single application of this product just prior to planting or after plants emerge. Work into the top 4 to 6 inches of soil. Use 5 cups (1/2 lb.) for a 350 sq. ft. area.

HOME VEGETABLE GARDEN SPREADER TIPS

| Spreader | 5 cups (1/2 lbs.) of product for 350 sq. ft. | Directions |
|---------------------------------|--|---|
| Scotts AccuGreen® Drop Spreader | 3-1/4 | Operate spreader the longest way of the garden area. Overlap wheel marks to ensure uniform feeding. Shut off spreader when you have reached the header strips or stopped. |
| Scotts SpeedyGreen® Rotary | 2 | Shut off spreader anytime you stop. For complete coverage make each pass about five feet from the previous one, so some overlapping occurs. |

When using other spreaders, calibrate the spreader settings based on the manufacturer's recommendations.

| Vegetables | Days to wait to harvest | Pests |
|---|-------------------------|---|
| Green Peas, Edible Pods (Sugar Snap Peas, Snow Peas), Green Beans (Wax Beans, Snap Beans), Dry Beans (Black-eyed Peas, Cowpeas) | 3 Days | Ants, cutworms, crickets, earwigs, grasshoppers, grubs, seed maggots, weevils and wireworms. |
| Sweet Corn | 1 Day | Ants, armyworm, cutworms, crickets, earwigs, European corn borer, fall armyworm, grasshoppers, southwestern corn borer and weevils. |
| Broccoli, Brussels Sprouts, Cabbage, Cauliflower, Cavalo Broccoli, Chinese Broccoli, Chinese Cabbage, Kohlrabi | 7 Days | Ants, cutworms, crickets, earwigs, grasshoppers, grubs, seed maggots, weevils and wireworms. |
| Cucurbit Vegetables Chayote, Citron melon, Cucumber, Edible Gourd, Muskmelon (Cantaloupe, casaba, Crenshaw melon, Golden melon, Honeydew Melon, Pineapple melon, Santa Claus melon, Snake melon), Pumpkin, Summer squash (Crookneck, Scallop, Straightneck, Zucchini), Winter squash (Butternut, Calabaza, Hubbard including Acorn and Spaghetti), Watermelon | 3 Days | Ants, cutworms, crickets, earwigs, grasshoppers, grubs, seed maggots, weevils and wireworms. |
| Tomatoes | 1 Day | Ants, cutworms, earwigs, grasshoppers, grubs, seed maggots, weevils and wireworms. |
| Peppers | 7 Days | Ants, cutworms, crickets, earwigs, grasshoppers, grubs, seed maggots, weevils and wireworms. |
| Eggplant | 7 Days | Ants, cutworms, crickets, earwigs, grasshoppers, grubs, seed maggots, weevils and wireworms. |
| Head Lettuce | 7 Days | Ants, cutworms, crickets, earwigs, grasshoppers, grubs, seed maggots, weevils and wireworms. |

STORAGE AND DISPOSAL
 Do not contaminate water, food or feed by storage or disposal.
PESTICIDE STORAGE: Keep out of reach of children and animals. Store in original containers only. Store in a cool, dry place and avoid excess heat. Carefully open containers. After partial use close tightly.
CONTAINER DISPOSAL: If empty: Non-refillable container. Do not reuse or refill this container. Empty container through use according to label instructions. Place in trash or offer for recycling if available. If partly filled: Call your local solid waste agency for disposal instructions. Never place unused product down any indoor (including toilet) or outdoor (including sewer) drain.

For Chemical Spill, Leak, Fire, or exposure, Call CHEMTREC (800) 424-9300 For Medical Emergencies Only, Call (877) 325-1840

For More Information Call 888-648-9855
 Eliminator® is a registered trademark of Gro Tec, Inc.
 Distributed by Gro Tec, Inc.
 P. O. Box 290 Madison GA 30650
 EPA REG. NO. 53883-121-59144
 EPA EST. NO. 59144-GA-1A, 67572-GA-1a, 44616-MO-1c,
 Subscript used is first letter of run code on container.



as necessary only if
 The directions for use of this product must be followed carefully, TO THE EXTENT CONSISTENT WITH APPLICABLE LAW, (1) THE GOODS DELIVERED TO YOU ARE FURNISHED "AS IS" BY MANUFACTURER OR SELLER AND (2) MANUFACTURER AND SELLER MAKE NO WARRANTIES, GUARANTEES, OR REPRESENTATIONS OF ANY KIND TO BUYER OR USER, EITHER EXPRESS OR IMPLIED, OR BY USAGE OF TRADE, STATUTORY OR OTHERWISE, WITH REGARD TO THE PRODUCT SOLD, INCLUDING, BUT NOT LIMITED TO MERCHANTABILITY, FITNESS FOR A PARTICULAR PURPOSE, USE, OR ELIGIBILITY OF THE PRODUCT FOR ANY PARTICULAR TRADE USAGE. LIMITS THESE CONSEQUENCES, INCLUDING BUT NOT LIMITED TO, DEFECTIVENESS, MAY RESULT BECAUSE OF SUCH FACTORS AS THE PRESENCE OR ABSENCE OF OTHER MATERIALS USED IN COMBINATION WITH THE GOODS, OR THE MANNER OF USE OR APPLICATION, INCLUDING WHETHER ALL OF WHICH ARE BEYOND THE CONTROL OF MANUFACTURER OR SELLER AND ASSURED BY BUYER OR USER. THIS WRITING COVERS ALL OF THE REPRESENTATIONS AND AGREEMENTS BETWEEN BUYER, MANUFACTURER AND SELLER, AND NO PERSON OR AGENT OF MANUFACTURER OR SELLER HAS ANY AUTHORITY TO MAKE ANY REPRESENTATION OR AGREEMENT RELATING IN ANY WAY TO THESE GOODS.
LIMITATION OF LIABILITY
 TO THE EXTENT CONSISTENT WITH APPLICABLE LAW, IN NO EVENT SHALL MANUFACTURER OR SELLER BE LIABLE FOR SPECIAL, INCIDENTAL, OR CONSEQUENTIAL DAMAGES, OR FOR DAMAGES IN THEIR NATURE OF PAIN AND SUFFERING, INCLUDING TO THE GOODS SOLD, INCLUDING USE, APPLICATION, HANDLING, AND STORAGE. MANUFACTURER OR SELLER SHALL NOT BE LIABLE TO BUYER OR USER BY WAY OF REPRESENTATION OR OTHERWISE TO CUSTOMERS OF BUYER, IF ANY, OR FOR ANY DAMAGES OR CLAIMS OF ANY KIND OR DAMAGES WHATSOEVER, RESULTING FROM THE USE OF OR HANDLING OF THE GOODS, OR FAILURE TO FOLLOW LABEL, WARNINGS OR INSTRUCTIONS FOR USE, OF THE GOODS SOLD BY MANUFACTURER OR SELLER TO BUYER. ALL SUCH DAMAGES SHALL BE ASSUMED BY THE BUYER, USER, OR ITS CUSTOMERS, BUYERS OR USER'S EXCLUSIVE REMEDY AND MANUFACTURER'S OR SELLER'S TOTAL LIABILITY SHALL BE FOR DAMAGES NOT EXCEEDING THE COST OF THE PRODUCT.
 If you do not agree with or do not accept any of the directions for use, the warranty disclaimers, or limitations on liability, do not use the product, and return it unopened to the Seller, and the purchase price will be refunded. *EPA/121496

Ant, Flea & Tick Killer PLUS Granules

ELIMINATOR®

Ant, Flea & Tick Killer PLUS Granules

READY TO USE
 Treats up to 22,000 sq. ft.
 Kills 50+ listed insects including chinch bugs, mole crickets and grubs
 For use on Lawns, Home Perimeter, Ornamental & Flower Gardens

Keeps insects away for up to 2 months in Lawns & Landscapes
 Kills Listed Insects

FAST ACTING AND ODOR FREE

28 LB LARGER SIZE

NET WEIGHT 28 LBS (12.71kg)

CAUTION
 See back panel for additional precautionary statements.

KEEP OUT OF REACH OF CHILDREN

*Chinch bugs 97% minimum, ants 99% minimum

ACTIVE INGREDIENT: 0.1%
 Bifenthrin 99.9%
 OTHER INGREDIENTS: 100.0%
 TOTAL: 100.0%